



ENGLISH



KF15116

INSTRUCTION MANUAL

ERGONOMIC WIRELESS MOUSE RIGHT-HANDED

[English] **Instruction manual**

Interaction-Connect S.A. - 296-298 Route de Longwy,
L-1940 Luxembourg, Luxembourg
info@interaction-connect.com

EVO Global Holdings Limited - Newland House, Unit 2,
Express Way, Tuscany Park, Normanton, WF6 2TZ, UK
info@evo-group.co.uk - www.evo-group.co.uk

Importers:



Content

- 1x Q-Connect ergonomic wireless vertical computer mouse
 - Black (Item no.: KF15116)
- 1x USB Wireless receiver
- 2x AAA Battery



Mouse (KF15116)



USB Wireless
Receiver



AAA Battery (2)

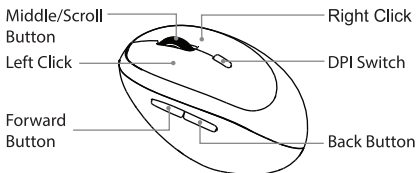
Operating- and safety instructions



Battery

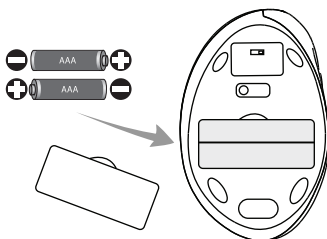
- Keep batteries out of the reach of small children.
 - A swallowed battery can cause internal chemical burns in as little as two hours and lead to death. Dispose of used batteries immediately. If you think batteries might have been swallowed or placed inside any part of the body, seek immediate medical attention.
-
- Please read the following operation and safety instructions carefully before using this product to ensure safe and proper use. If these instructions are not followed, you may damage this product or your device and will void your warranty.
 - This product is not meant for a commercial use or for medical and special applications, where the failure of the product may cause injuries, death or significant material damages.
 - Please use the required type of battery only and check for correct polarity (+/-).
 - Do not look directly into the optical beam.
 - Do not hide/cover the optical sensor and use a bright surface. A reflective surface is not suitable to operate this device.
 - To avoid any loss during transport, we suggest to store the nano dongle inside the compartment on the bottom of this device.
 - This product is equipped with a power switch: To extend the batteries' life time, we suggest to switch off the device when it's not in use.
 - Do not open the product and do not attempt to repair the product yourself: Doing so puts you at risk of injury or causing damage to the device and will void your warranty.
 - Avoid subjecting the product to heavy shocks and protect it against impacts and falls at all times.
 - Do not use the product and accessories if there is any visible damage, if it has come into contact with water or other fluids, or if it is damp.
 - Keep the product away from fire, water and other fluids at all times.
 - Do not use the product in extremely cold, hot, damp or dusty areas.
 - Operate this product only in a dry environment between 0°C and 35°C only.
 - Do not operate this product in areas and places where the use of electronic equipment is not permitted.
 - Product images may vary from the actual product. The content of this user manual may be revised without prior notice.
 - The mode of operation in here, is depending on the device and may work differently as described.
 - If the product does not operate properly, disconnect the dongle/receiver from the USB port of your computer and reconnect it after a moment.

Functions

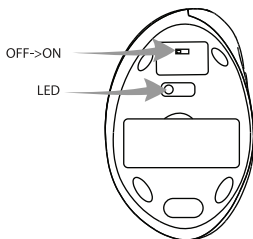


Installation

1. Turn on your computer.
2. Take off the batteries cover and insert the batteries.



3. Switch to On. LED indicator will blink RED shortly while connecting.



4. Insert the wireless receiver into your computer USB port. Your operating system will automatically detect and connect the device.



USB Wireless Receiver

Care and cleaning

- Switch off the device before cleaning.
- Use only a slightly damp lint-free cloth to clean the product.
- Do not use any aggressive cleaning agents.
- When cleaning, ensure that no water or other liquids get into the connections or the product.

Customer services

If you have any questions about our products, please contact Q-Connect customer services by email: info@interaction-connect.com.

Technical data and product information

Model and item number:

Q-Connect ergonomic wireless vertical computer mouse – Black
(Item no.: KF15116)

Power rating mouse/dongle:

DC 3V = 6mA max.; 2x 1.5V AAA battery required (included)

Connection:

Via USB 2.0 2.4 GHz nano dongle with up to 10m transmitting distance

Purpose:

Ergonomic mouse for relieving tension of wrist and elbow; for use with computers and laptops in the office or at home. Vertical ergonomic design with optical sensor.

Size and weight:

105 x 66 x 58 mm; ± 70 g (without batteries)

Operating and storage conditions:

Operating temperature between 0°C and 35°C; between 20% and 90% relative humidity. Storage temperature between -20°C and 60°C

Sensor, resolution and responsiveness:

Optical sensor : 800/1200/1600/2400 DPI; adjustable via DPI switch button

Features:

6 buttons (Left / Right Mouse Click, Back/ Forward Button, DPI Switch, Scroll Wheel & Middle Button)

Compatibility:

For Computers and laptops with current Windows (Windows® 98 & above), Mac and Linux OS; Plug & Play

Disclaimer of warranty

Please note that Interaction-Connect S.A. will not be held liable for the loss of data on devices sent to us. Warranty claims will not be accepted where the operating instructions have not been observed and in the case of improper use or where defects have been caused by another device. Warranty claims will not be accepted if the product has been subjected to shocks, electrical discharges or heat and moisture in a manner that is contrary to the product specification. Q-Connect will not be held liable for any indirect or secondary damages, for breaches of the warranty conditions or for other damages, regardless of the cause. Please be aware that opening the casing of the product will void the warranty. This product is not intended for commercial, medical or specialist applications in which failure of the product may result in injuries, death or significant material damages.

Implied warranty and warranty conditions

The warranty covers the replacement of the Q-Connect product only. All Q-Connect products are subject to the legally required warranty period from the date of purchase. Please keep your receipt as proof of purchase. All Q-Connect products are subject to constant quality checks. Despite this, in the event that you find a material and/or production fault, please contact Q-Connect customer services to make a warranty claim. The warranty covers the repair or replacement of faulty parts. Please be aware that warranty claims will not be accepted where the cause is determined to be a result of the following (example reasons):

- Incorrect or improper handling, installation or use
- Failure to observe usage and safety information
- Damage, scratches or wear
- Modifications, opening of the product or repair by third parties
- Damage as a result of force majeure or transport

To make a claim, please contact your sales point.

Additional information

Declaration of conformity

Hereby Interaction-Connect S.A. declares that this product is in compliance with the Radio Equipment Directive (RED) 2014/53/EU and fulfils the requirements of the restriction of the use of certain hazardous substances in electrical and electronic equipment Directive (RoHS) 2011/65/EU and 2015/863/EU. Designed for indoor use only. The detailed declaration of conformity for this product is available by its corresponding item no(s): KF15116 at our website: www.q-connect.com.

Disposal of used electronic equipment

This device is subject to the European Directive 2012/19/EG. All electrical devices and used electrical equipment must be disposed of separately from household waste over the appropriate government agencies. Proper disposal of old electronic equipment helps avoid environmental damage.

Disposal of old batteries

This device is subjected to the European Directive 2006/66/EG. All the old batteries must be disposed separated from household garbage through the government agencies designated for that purpose. By disposing the batteries in this prescribed manner, you can avoid environmental damages.

Copyright© 2026 Interaction-Connect S.A. Q-Connect and the Q-Connect logo are registered trademarks of Interaction-Connect S.A. All brands and product names referenced in this user manual are property of their respective owners and referred to for descriptive purposes only.